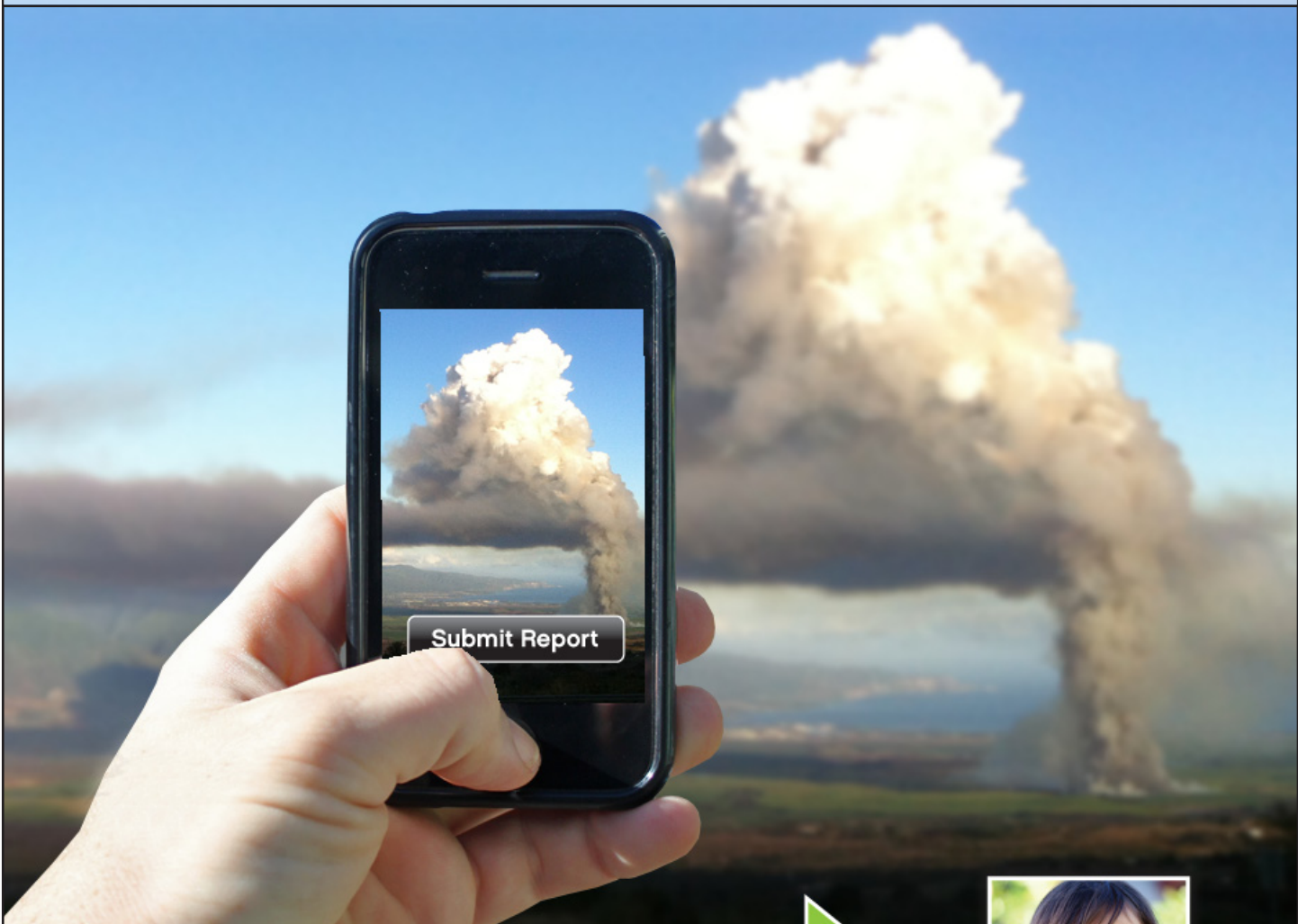




## 2013 Annual Progress Report



Clean Air for **KEIKI**



**Aloha** It's the time of year to count our blessings and make plans for a new year. We consider you one of our greatest blessings as your continued support makes our efforts possible!

Below is a snapshot of Maui Tomorrow's priorities in 2013. We hope you agree that Maui Tomorrow continues to be your voice in planning a sustainable future for the island we love.

## Clean Air

We've made great strides in our Clean Air for Keiki campaign [www.cleanairforkeiki.org](http://www.cleanairforkeiki.org) in the last year, meeting with the state Department of Health/Clean Air Branch and EPA Region 9 which resulted in those agencies placing tighter restrictions of HC&S's 2013 burn permit; and obtaining a 2nd air quality monitor placed in Paia (for many years we've only had one in North Kihei). We've asked EPA for a third monitor somewhere in Wailuku in order to monitor air quality in the entire central valley of Maui.



*CleanAirMaui Smartphone App*

Through the efforts of our Clean Air for Keiki campaign, the state's Clean Air Branch issued smoke violations to HC&S and for the first time ever, a fugitive dust violation.



*Fugitive dust on Mokulele Hwy.*



*Smoke fills Maui's central valley*

Most exciting is our CleanAirMaui smartphone app which empowers the community to report excessive smoke, ash, and dust violations from their phones with accurate GPS location, time and date stamp, and photo. This information goes directly to EPA Region 9; the state Department of Health's Clean Air Branch; and the County of Maui's Mayor's Office.

## Advocating for Sustainable Farming Practices

Changing weather patterns and a growing population with homes and schools now located in areas once unaffected by HC&S field practices have increased adverse health impacts to our community so adapting to 21st century sustainable practices makes sense.

Australia's sugar industry can serve as an example. Environmental awareness came when the industry



*Green harvesting sugar cane*

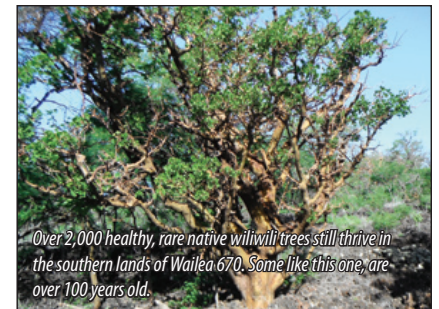
developed a Code of Practice for Sustainable Cane Growing, addressing key environmental issues and adopting green harvesting and trash blanketing for over 80% of their crop. Australia has dramatically

reduced the need for cane burning while trash blanketing has increased organic matter in the soil and protected it from erosion.

They see sustainability as a basis for ensuring long-term viability and a guarantee that future generations will continue to produce sugar – for a profit.

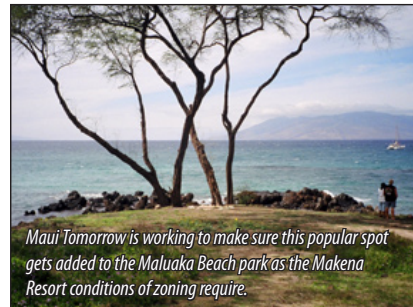
## Preservation of Natural Resources

A major victory in 2013 was the recent announcement that the proposed Wailea 670 development has boosted the size of its native plant and cultural preserve from 40 to 130 plus acres. Six years of work



*Over 2,000 healthy, rare native wiliwili trees still thrive in the southern lands of Wailea 670. Some like this one, are over 100 years old.*

by Maui Tomorrow staff and volunteers advocating for this important resource has made a huge difference.



*Maui Tomorrow is working to make sure this popular spot gets added to the Maluaka Beach park as the Makena Resort conditions of zoning require.*

We're also moving ahead with the state Department of Land and Natural Resources on Makena State Park issues and an updated master plan for the park. As part of the Oneloa Coalition we're working to restore Paniaka

Fishpond at Makena and are in meetings with the new partners in Makena Resort to keep pushing for preservation of cultural and environmental resources if and when the resort moves forward.

We've also joined forces with other local organizations to form the Friends of Kanaha, a coalition working to protect wetlands and endangered flora and fauna in Central Maui.



*Endangered Hawaiian Stilt*

## Water Resource Management

Water issues continue to be a major push. We supported several community groups in their recent 2nd Circuit Court





Activist Lucienne de Naie along East Maui stream

victory asking the County of Maui Department of Water Supply to keep its promises of thorough research before proposing expensive wells in Haiku to service future South Maui growth.

We're working with County staff to promote increased use of recycled water, reuse of gray water and the protection of areas upslope of all public wells.



Recycled water for golf courses

We continue work to restore stream flow in Na Wai Eha in the West Maui Mountains, educating the public about the



Algae bloom at Maalaea Bay

importance of this natural aquifer recharge in the face of on-going drought and changing weather patterns. We participated in a recent study that found significant levels

of Diuron, a carcinogenic weed killer that can decimate coral reefs, in run-off from local cane fields into Maalaea Bay. With these findings we begin a dialogue with Maui County and large agricultural interests to develop sustainable practices to keep polluted run-off from entering near shore waters.

## Land Use Planning

Earlier this year we prevailed at the state Land Use Commission in requiring greater scrutiny over a proposed megamall in North Kihei. We're currently appealing a Special Management Area (minor) permit for a proposed project in Paia that circumvented the legal process which protects public participation and allows for citizen testimony before the Maui Planning Commission.



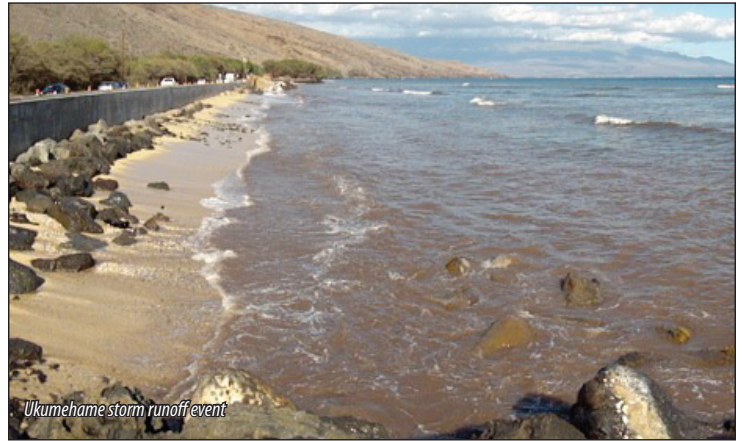
Plaintiffs Daniel Kanahale, Irene Bowie, and Mark Hyde with attorney Tom Pierce

We continue to be Maui's foremost organization to take legal actions when necessary and are proud to serve as the local watchdog for enforcement of Hawaii's environmental and land use laws.

## Shoreline Protection

Maui Tomorrow is proud to be a member of the newly formed Hawaii chapter of the American Shore & Beach Preservation Association. This Association is dedicated to preserving, protecting and enhancing the beaches, shores and other coastal resources of America.

On Maui, 78 percent of our beaches have eroded over the past century with an island-wide average shoreline change rate of 13 centimeters per year. As state and county agencies consider more shoreline hardening projects, Maui Tomorrow works to encourage our elected officials to implement sea level rise adaptation programs; invest more funds to purchase key vulnerable lands; and promote a state-wide retreat from our moving shoreline.



Ukumehame storm runoff event

Maui Tomorrow thanks our incredibly generous patrons over the years. Your support makes our work possible and is much appreciated. As 2013 comes to a close we humbly ask for your continued financial support into the new year as we advocate and educate in order to protect Maui's future.

**Mahalo nui,  
Irene Bowie  
Executive Director**





55 N. Church Street, Suite A4  
Wailuku, Hawaii 96793  
808.244.7570  
[director@maui-tomorrow.org](mailto:director@maui-tomorrow.org)